

Statement of Qualifications

Professional Planning Services



356 Franklin Avenue
Wyckoff, NJ 07481
Phone: (201) 847-2900
Fax: (201) 847-2424
www.kaukerplan.com

 **Kauker
& Kauker**, LLC

Town Planning and Development Consultants

INTRODUCTION TO THE FIRM

Kauker & Kauker, LLC, formerly known as Michael F. Kauker Associates, Town Planning and Development Consultants, has provided professional planning services to public, private and non-profit clients for over two decades.

While our basic expertise is in the preparation of master plans and zoning ordinances, we have proven abilities to provide specialized services in economic development, grant procurement, GIS Mapping, downtown revitalization, Mount Laurel housing issues and park development planning.

We have provided extensive expert witness representation and zoning advice for over 700 private clients, covering the full spectrum of variance applications, residential and commercial development projects and zoning amendment applications.

We pride ourselves on providing professional, creative and productive solutions to planning and zoning problems.

Kauker & Kauker, LLC
356 Franklin Avenue
Wyckoff, NJ 07481
P: (201) 847-2900
F: (201) 847-2424
www.kaukerplan.com

PUBLIC PLANNING SERVICES

Planning Board & Zoning Board of Adjustment Assistance

- Assisting Local Planning Board and Zoning Boards in the review of subdivision, site plan and variance applications.

Comprehensive Master Planning

- Preparation of comprehensive master plan and sub-elements including but not limited to:
 - Land Use Plan
 - Housing Plan
 - Circulation Plan
 - Community Facilities Plan
 - Recreation Plan
 - Conservation Plan
 - Economic Plan
 - Historic Preservation Plan
 - Recycling Plan
 - Farmland Preservation Plan
- Preparation of Master Plan Reexamination Reports

Local Development & Redevelopment Planning

- Area In Need of Redevelopment Studies
- Preparation and implementation of Redevelopment Plans
- Assistance in redeveloper selection
- Assistance in preparation of Redeveloper's Agreement

Zoning Ordinance Preparation & Amendments

Open Space & Recreation Planning

- Preparation of Open Space & Recreation Plan for eligibility for Green Acres Funding
- Preparation of a Recreation & Open Space Inventory List (ROSI), which includes existing and potential sites
- Identification of potential recreation and open space sites for acquisition
- Recreation Park Planning & Design

Streetscape Improvement & Design

Grant Procurement

- Assisting municipalities in identifying and evaluating grant opportunities
- Assisting municipalities in applying for and obtaining grants

Affordable Housing Assistance

- Extensive experience in navigating the COAH process, including:
 - Preparation of Housing Plans
 - Petitioning COAH for Substantive Certification
 - Assistance in preparation and submission of Annual Monitoring Forms

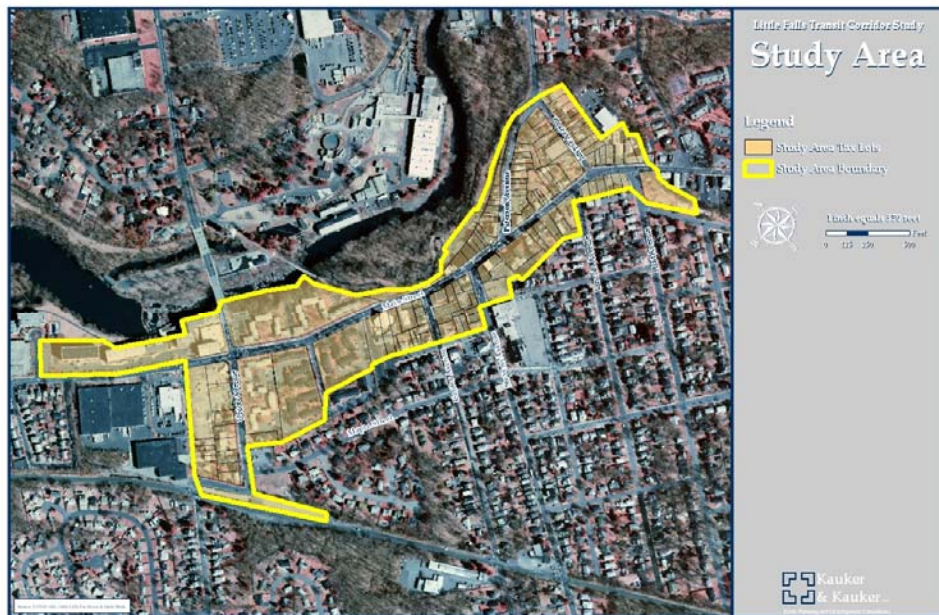
PRIVATE PLANNING SERVICES

- Private Planning Services
- Expert Planning Testimony before Planning Boards and Zoning Boards of Adjustment
- Expert Planning Witness before Courts of Law
- Planning and Zoning Analysis Reports
- Site Analysis and Feasibility Studies
- Conceptual Development Design
- Fiscal Impact Analysis (Cost-Benefit Analysis)
- Social Impact Analysis
- Economic Impact Analysis
- Environmental Impact Analysis
- Outdoor advertising applications in the following communities in New Jersey: Cherry Hill, Maple Shade, Trenton, Wayne

Geographic Information Systems (GIS) / Planning Graphics

Kauker & Kauker, LLC uses state of the art computer programs for its mapping, drafting, planning reports, Master Plans, Redevelopment Plans and graphic presentations. This includes ArcGIS, AutoCAD, PowerPoint, the Adobe Creative Suite (Photoshop & Illustrator), and other graphics programs, which allows us to enhance the visually quality of our documents and presentations.

Below are a couple examples:



Kauker & Kauker, LLC
 356 Franklin Avenue
 Wyckoff, NJ 07481
 P: (201) 847-2900
 F: (201) 847-2424
 www.kaukerplan.com

MASTER PLAN & ZONING ORDINANCE PREPARATION

Preparation of Master Plans and Zoning Ordinances in conformance with the requirements of the Municipal Land Use Law for the following communities:

- Borough of Bloomingdale
- Borough of Butler
- Borough of Demarest
- Borough of East Rutherford
- City of Garfield
- Borough of Glen Rock
- Town of Haverstraw (NY)
- Township of Little Falls
- Borough of Maywood
- Borough of New Milford
- Borough of North Haledon
- Borough of Northvale
- Borough of Norwood
- Borough of Oakland
- Borough of Palisades Park
- Borough of Riverdale
- Borough of Rockleigh
- Borough of Rochelle Park
- Borough of Rutherford
- Borough of Totowa
- Borough of Upper Saddle River
- Borough of Wanaque
- Village of West Haverstraw (NY)
- Borough of West Paterson

AFFORDABLE HOUSING: LITIGATION & HOUSING PLAN PREPARATION

- Borough of Bloomingdale
- Borough of East Rutherford
- Township of Little Falls
- Township of Mahwah
- Borough of Montvale
- Borough of North Haledon
- Borough of Norwood
- Borough of Oakland
- Borough of Palisades Park
- Borough of Riverdale
- Township of River Vale
- Township of Saddle Brook
- Township of South Hackensack
- Borough of Totowa
- Village of West Haverstraw (NY)
- Borough of West Paterson

CURRENT & FORMER MUNICIPAL CLIENTS

Provision of continuing consulting advice, review of subdivision and site plan applications, preparation of planning analyses and impact studies regarding localized planning issues and attendance at Planning Board and Board of Adjustment meetings on an as-needed basis for the following communities:

- Borough of Bloomingdale
- Borough of Englewood Cliffs
- Borough of Glen Rock
- Borough of Haledon
- Town of Haverstraw (NY)
- Township of Little Falls
- Borough of Maywood
- Borough of Montvale
- Borough of New Milford
- Township of North Bergen
- Borough of North Haledon
- Borough of Northvale
- Borough of Norwood
- Borough of Oakland
- Borough of Palisades Park
- Borough of River Vale
- Borough of Riverdale
- Township of Rochelle Park
- Borough of Rockleigh
- Township of Saddle Brook
- Village of Spring Valley (NY)
- Borough of Totowa
- Borough of Wanaque
- Village of West Haverstraw (NY)
- Borough of West Paterson
- Township of Wyckoff

REPRESENTATIVE PROJECTS

Recreation and Open Space Planning and Design

- Borough of Butler - one park
- Borough of East Rutherford - three parks
- Township of Mahwah - two parks
- Borough of Oakland - one park
- Borough of Wanaque - three parks

Grant Procurement Work Experience in Support of Municipal Projects Parks and Recreation Grants (Green Acres and Federal Grants)

- Borough of Oakland, \$250,000, park lighting and field house construction
- Borough of Oakland, \$2,000,000, open space acquisition of Ramapo Mountains
- County of Passaic, \$650,000, park improvement funds
- Borough of Wanaque, \$100,000, Addiss Park
- Borough of Wanaque, \$500,000, Back Beach Park
- Borough of Wanaque, \$100,000, Memorial Park

Community Development Projects

- Borough of Butler, Senior Housing Project, HUD 202 Funds
- Borough of East Rutherford, Commercial Revitalization Funds
- Borough of East Rutherford, Street Tree Planting Funds, Federal Department of Interior
- Borough of Oakland, Residential Rehabilitation
- County of Passaic, Housing Improvement Funds
- Borough of Riverdale, Street and Sidewalk Improvement Funds
- Borough of Wanaque, Senior Center

Special Public Works Grants

- Borough of East Rutherford, \$65,000, Library Handicapped Access
- Borough of East Rutherford, \$85,000, Borough Hall Handicapped Access
- Borough of Wanaque, \$250,000, Borough Hall renovation
- Township of Wayne, \$850,000, Valley Road extension

Central Business District Planning and Design Work

- Borough of Butler
- Borough of Englewood Cliffs
- Borough of New Milford
- Borough of Oakland
- Borough of Riverdale
- Borough of Wanaque, including Town Center Designation

Representative Private Sector Residential and Commercial Development Projects

- Borough of Butler, townhome project for Town and Country Developers
- City of Clifton, mixed-use development for Related Companies
- Borough of Edgewater, commercial and residential redevelopment for G. Heller Enterprises
- Borough of Old Tappan, assisted living residence for Sunrise Assisted Living
- Borough of Park Ridge, Bear's Nest townhouse development for Pinnacle Communities
- Borough of Waldwick, neighborhood shopping center for private client
- Township of Wayne, assisted living residence for Sunrise Assisted Living
- Borough of Westwood, multi-family residential project for Century 21 Construction

Kauker & Kauker, LLC
356 Franklin Avenue
Wyckoff, NJ 07481
P: (201) 847-2900
F: (201) 847-2424
www.kaukerplan.com

REPRESENTATIVE CURRENT & FORMER PRIVATE CLIENTS

Residential

- Bellemead Development
- Century 21 Construction
- Garden Homes
- Greenway Homes
- Hovnanian Companies
- Pinnacle Communities

Special-Purpose Senior & Adult Residential Projects

- Arden Courts
- Brandywine Senior Care
- Sunrise Assisted Living
- Pulte Lifestyle Communities
- Senior Campus Living
- Franciscan Sisters of Ringwood

Commercial

- Bally Total Fitness Corporation
- Daibes Enterprises
- G. Heller Enterprises
- Kings Supermarkets
- McBride Enterprises
- Mercedes-Benz USA, LLC
- New York Sports Club
- Pio Costa Enterprises
- Platinum Realty Group
- Prestige Motors
- The Related Companies
- Sanzari Enterprises
- Shotmeyer Oil Company
- Starwood Ceruzzi
- Sunrise Development Inc.
- Target Stores
- Toys “R” Us

Banks

- Central Bergen Federal Credit Union
- Commerce Bank
- Dime Savings Bank
- HSBC Bank USA, N.A.
- Lakeland Bank
- Valley National Bank

Educational Institution

- Touro College

Restaurants

- Checkers
- Crab House
- KFC
- Wendy’s

Non-Profits

- Boy Scouts of America, Bergen Council
- Franciscan Sisters of Ringwood
- New Jersey Bible Church
- New Synagogue of Fort Lee

Kauker & Kauker, LLC
356 Franklin Avenue
Wyckoff, NJ 07481
P: (201) 847-2900
F: (201) 847-2424
www.kaukerplan.com

**REPRESENTATIVE LAND USE & ZONING ATTORNEY
CLIENTS**

- Barbarula & Associates
- Carbone & Faase
- Connell, Foley & Geiser
- Corrado & Corrado
- Charles DiMaria, Esq.
- Contant, Atkins & Fede LLC
- DeCotiis, FitzPatrick, Cole & Wisler, LLP
- Dennis J. Oury, LLC
- Diktas & Associates
- Dunn & Dunn
- Epstein, Epstein, Brown & Bosek
- Giblin & Giblin
- Gittleman, Muhlstock & Chewkaskie, LLP
- Greenbaum, Rowe, Smith & Davis
- Hanly & Ryglicki
- Hehl & Hehl
- Morton Hirschklau, Esq.
- Jeffer, Hopkinson & Vogel
- Johnson, Murphy, Hubner, McKeon, Wubbenhorst & Appelt
- La Forge, Binder & Assoc.
- Lanza & Lanza
- Maycher & Murphy
- McDonnell & Whitaker
- Melli, Guerin & Wall, PC
- Mizzone, Filko & Mizzone
- Morrissey, Rotolo & Di Donato
- Napolitano & Napolitano
- Nowell Amoroso Klein Bierman, PA
- Orbe, Nugent & Darcy
- Perconti & Cook, Esquires
- Price, Meese, Shulman, & D'Arminio
- Harold Riskin, Esq.
- Richard J. Kapner, Esq.
- Rubenstein, Rudolph, Meyerson, Blake & Strull
- Rubin & Connelly
- Scarinci & Hollenbeck
- Schuman, Hanlon & Panepinto
- Segreto Bruins & Segreto
- Sills Cummis Epstein & Gross
- Sinisi & Raso, LLP
- Tuttle & Zisgen
- Wells, Jaworski, & Liebman, LLP
- Winne, Banta, Rizzi, Hetherington & Basralian
- Winne, Dooley & Bole

STAFF PROFESSIONAL QUALIFICATIONS

Michael F. Kauker, PP
Principal

Michael D. Kauker, PP, AICP
Principal

Charles H. Heydt
Associate Planner

Kauker & Kauker, LLC
356 Franklin Avenue
Wyckoff, NJ 07481
P: (201) 847-2900
F: (201) 847-2424
www.kaukerplan.com

MICHAEL F. KAUKER, PP
PRINCIPAL

PROFESSIONAL EXPERIENCE

Kauker & Kauker, LLC – Feb. 2007 to present
Kauker, Gregory & Kauker, LLC – Jan. 2003 to Jan. 2007
Michael F. Kauker Associates - 1978-2002
Wyckoff, New Jersey

EDUCATION

RUTGERS UNIVERSITY
New Brunswick, New Jersey

Bachelor of Arts in Political Science and City Planning, 1964

SYRACUSE UNIVERSITY
GRADUATE SCHOOL OF ARCHITECTURE
Syracuse, New York

Toward Master of Regional and County Planning, 1964-1966

PROFESSIONAL CERTIFICATIONS

NEW JERSEY PROFESSIONAL PLANNER (License No. 993)

PROFESSIONAL AFFILIATIONS

AMERICAN PLANNING ASSOCIATION
NEW JERSEY PLANNING OFFICIALS
NEW JERSEY BUSINESS AND INDUSTRY ASSOCIATION

Kauker & Kauker, LLC
356 Franklin Avenue
Wyckoff, NJ 07481
P: (201) 847-2900
F: (201) 847-2424
www.kaukerplan.com

MICHAEL D. KAUKER, PP, AICP
PRINCIPAL

PROFESSIONAL EXPERIENCE

Kauker & Kauker, LLC, - Feb. 2007 to present

Kauker, Gregory & Kauker, LLC, - Jan. 2003 to Jan. 2007

Michael F. Kauker Associates – Jan. 1998 to Dec. 2002

Wyckoff, New Jersey

Michael D. Kauker is currently a principal planner in the firm of Kauker and Kauker, LLC. He has been employed in the field of planning since 1997 and is a licensed professional planner in the State of New Jersey as well as a member of the American Institute of Certified Planners. He holds a Master of Urban Planning from Hunter College in New York City and a Bachelor of Arts in Political Science from Arizona State University in Tempe, Arizona. Michael has served both public and private clients in his role as a professional planner and has prepared Master Plans, Zoning Ordinances, Housing Elements, Open Space and Recreation Plans, Environmental, Economic and Social Impact Statements. He serves as a consultant and provides technical assistance to planning and zoning Boards in both the State's of New Jersey and New York. He has also been accepted as an expert witness in the field of Planning and Zoning by approximately 100 planning and zoning boards. Michael has also given presentations regarding planning and zoning issues to municipal boards and has been a guest speaker in front of municipal and regional organizations, including the Northern Valley Planning Association.

EDUCATION

HUNTER COLLEGE, CITY UNIVERSITY OF NEW YORK

New York, New York

Master of Urban Planning, December 2000

ARIZONA STATE UNIVERSITY

Tempe, Arizona

Bachelor of Arts in Political Science with a related field of study in Economics, May 1993

PROFESSIONAL CERTIFICATIONS

NEW JERSEY PROFESSIONAL PLANNER (License No. 5737)

AMERICAN INSTITUTE OF CERTIFIED PLANNERS (AICP)

PROFESSIONAL AFFILIATIONS

AMERICAN PLANNING ASSOCIATION

Kauker & Kauker, LLC
356 Franklin Avenue
Wyckoff, NJ 07481
P: (201) 847-2900
F: (201) 847-2424
www.kaukerplan.com

Charles H. Heydt
ASSOCIATE PLANNER

PROFESSIONAL EXPERIENCE

KAUKER & KAUKER, LLC – Aug. 2010 to present

ASSOCIATE PLANNER Duties include review of site plan and subdivision applications; planning analyses regarding localized planning issues; socio-economic and fiscal impact studies; preparation of master plans, zoning ordinances, and redevelopment studies and plans for local municipalities in the northern New Jersey and southern New York area; preparation of fair share plans and housing elements as part of a comprehensive plan; planning and zoning analysis for private residential and commercial developers; streetscape urban design; site selection studies for various types of land uses, both public and private; creation of land use maps and other graphic presentation materials for planning testimony; and preparation of in-depth proposals for large planning projects such as city-wide master plans and redevelopment projects.

CENTER FOR URBAN POLICY RESEARCH – Dec. 2009 to Aug. 2010

New Brunswick, New Jersey

RESEARCH ASSOCIATE. Assisted in the preparation of various economic impact reports. Co-authored the *First Annual Report on the Economic Impact of the Federal Historic Tax Credit* and selected chapters of a report analyzing economic impact of the historical Route 66.

BERGEN COUNTY DEPARTMENT OF PLANNING AND ECONOMIC DEVELOPMENT – June 2009 to Jan. 2010

Bronx, New York

GRADUATE PLANNING INTERN. Conducted an intersection performance study to determine suitable corridors for BRT routes through downtown Hackensack, NJ. Analyzed travel to work data to support proposed BRT routes throughout Bergen County. Assisted in Visioning Workshops for the new Bergen County Master Plan.

RUTGERS UNIVERSITY – Sept. 2009 to Dec. 2009

New Brunswick, New Jersey

TEACHING ASSISTANT – METHODS II: APPLIED PLANNING ANALYSIS. Prepared and taught lab sessions, in which theories and principles of planning analysis were applied, including population projections, regional economic analysis, municipal cost-benefit analysis, and development pro forma analysis.

NEW JERSEY SUSTAINABLE STATE INSTITUTE – Sept 2008 to May 2009

New Brunswick, New Jersey

RESEARCH ASSISTANT. Created sustainability plans for several New Jersey communities including: Princeton Township and Borough, Hillsborough Township and Middlesex County. Analyzed data for indicators ranging from unemployment and median household income to impervious surface and water consumption.

**MUNICIPAL LAND USE CENTER AT THE COLLEGE OF NEW JERSEY -
May 2007 to May 2008**

Ewing, New Jersey

PLANNING INTERN. Conducted research and spatial analysis on “Einstein’s Alley” and the relationship between the Route 1 corridor and hi-tech companies located along the route in central New Jersey. Produced a mobility study for a Development and Planning Forum for The College of New Jersey.

EDUCATION

RUTGERS UNIVERSITY, THE STATE COLLEGE OF NEW JERSEY

New Brunswick, New Jersey

Master of City and Regional Planning, May 2010

The College of New Jersey

Ewing, New Jersey

Bachelor of Science in Economics

Minor in International Business, May 2008

PROFESSIONAL AFFILIATIONS

AMERICAN PLANNING ASSOCIATION